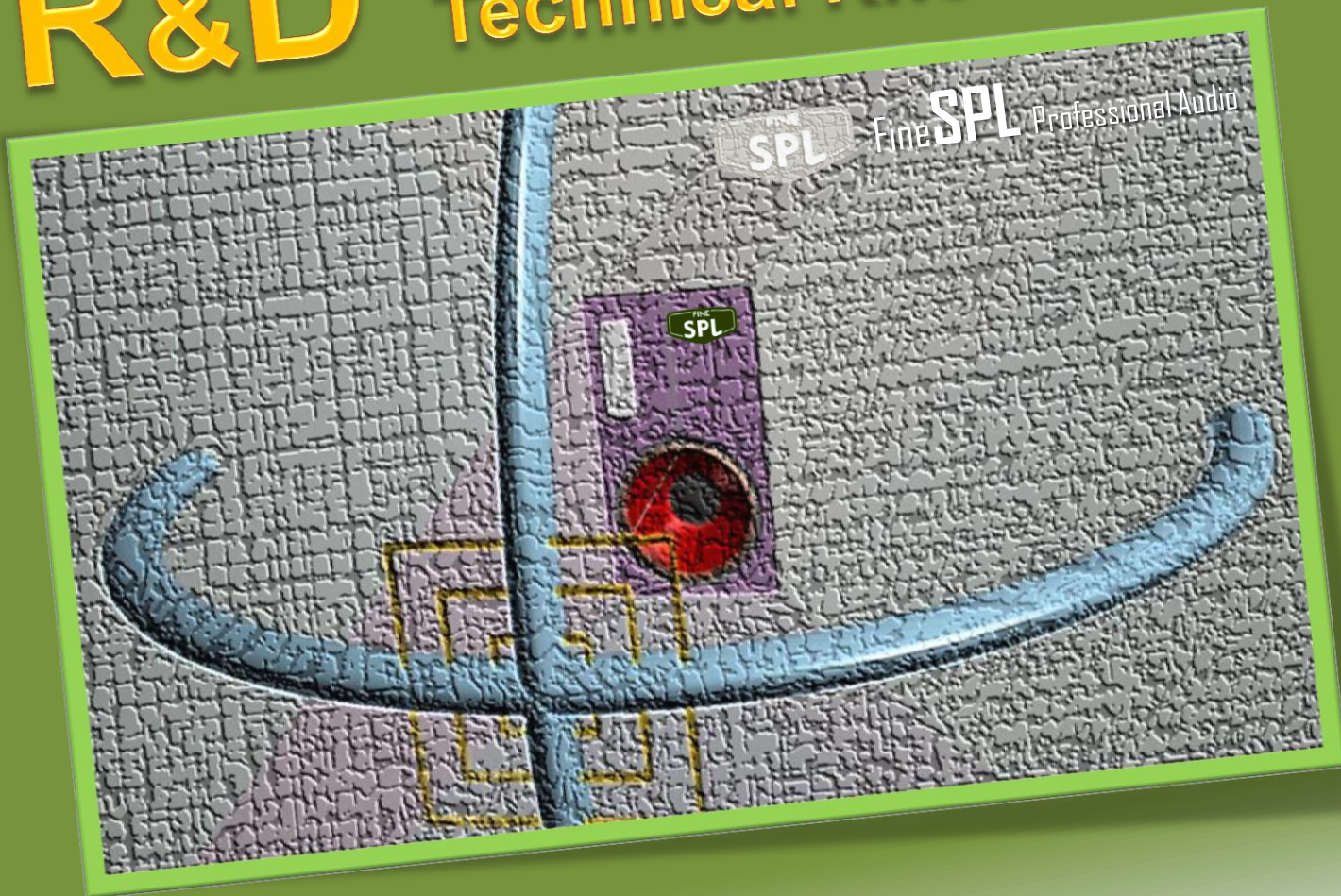


R&D Technical Know How

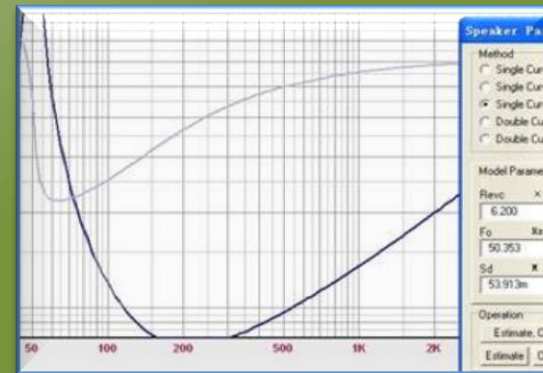




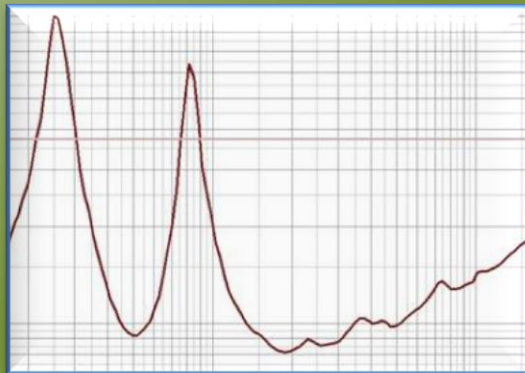
Fine**SPL** Professional Audio

Product Design Procedures

Pre simulation steps before
building cabinet



Pre-simulated
results to obtain
desired acoustic
data for cabinet
design criteria



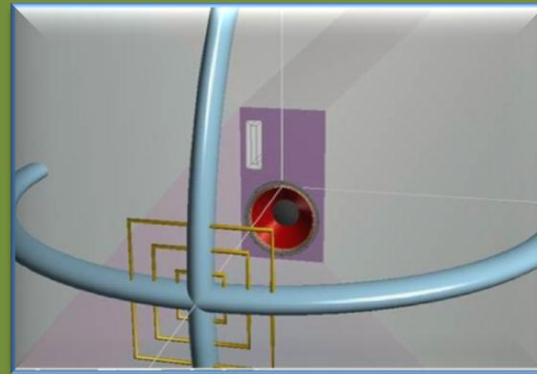
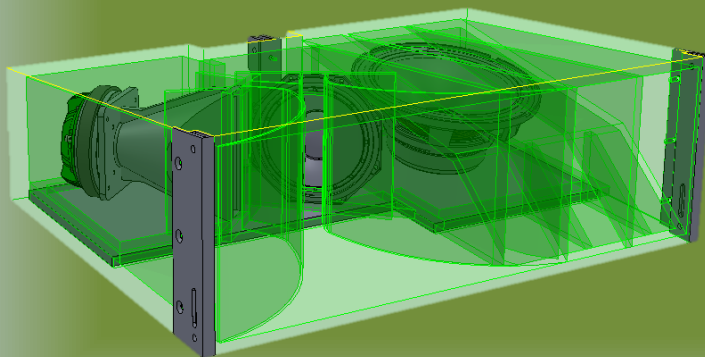
Impedance
analysis for
desired
acoustic data to
meet design
criteria



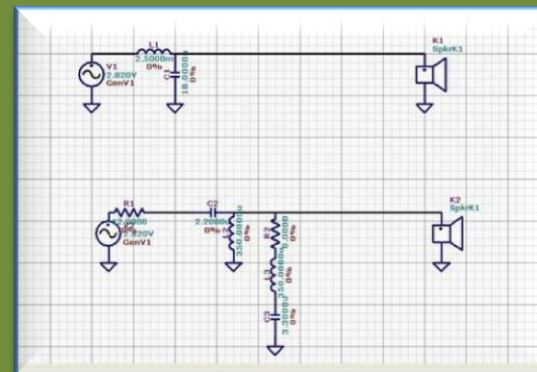
Measured
response curve
of all relative
transducers to
meet expected
design criteria



Acoustic Data Simulations

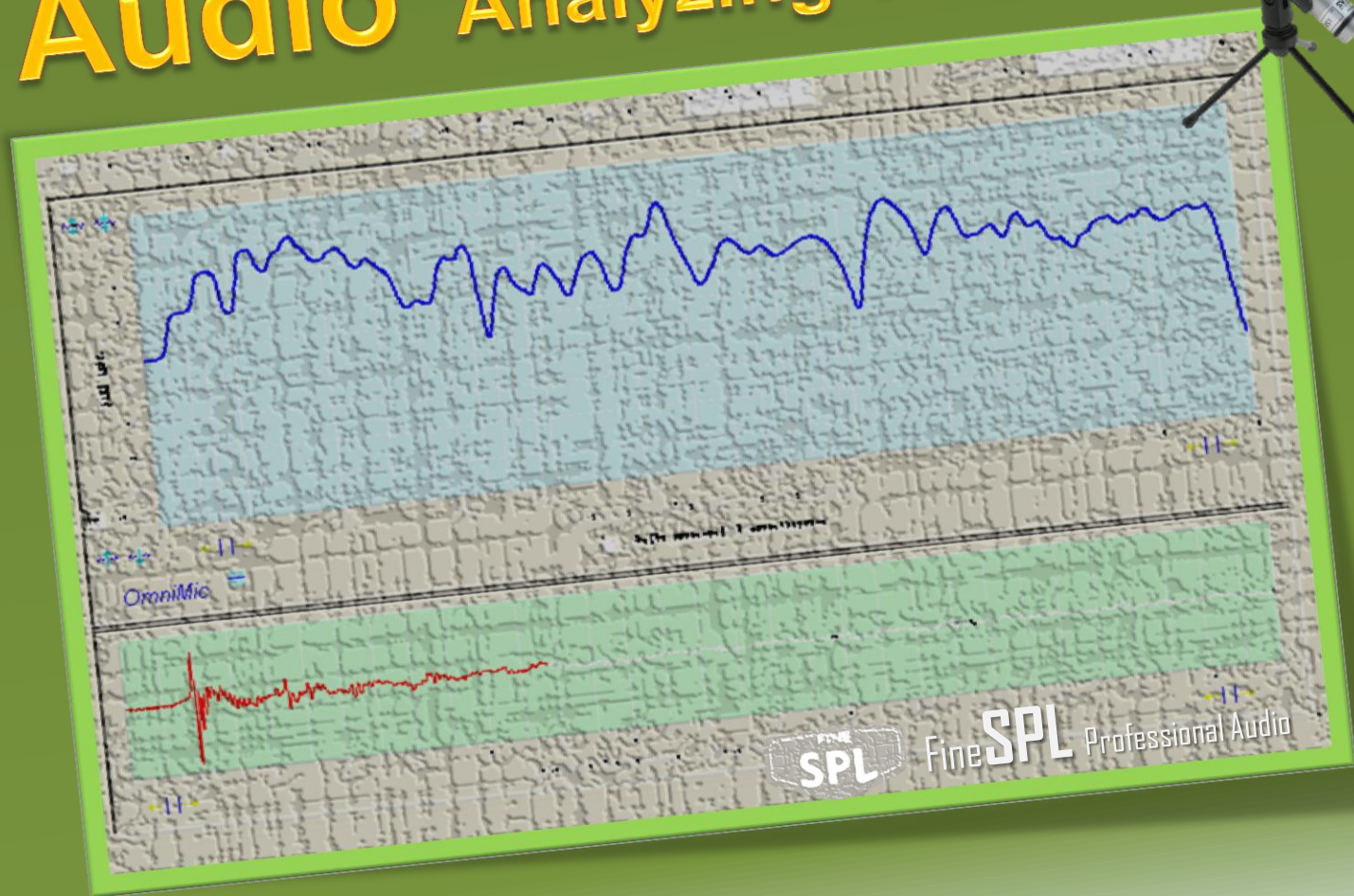


Cabinet volume
simulation with
all measured
acoustic data
input to LEAP
software



Simulated
crossover
dividing
network to build
golden sample
cabinet

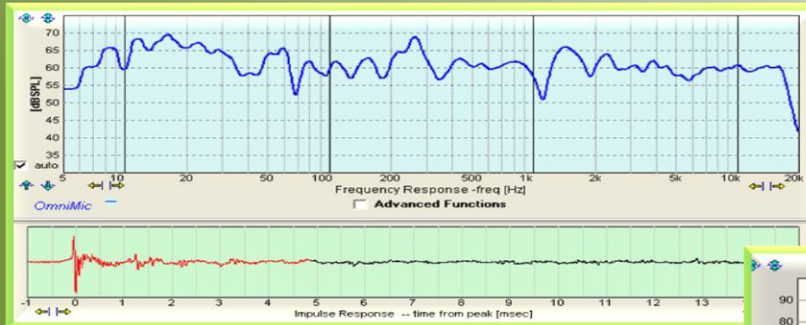
Audio Analyzing Tool



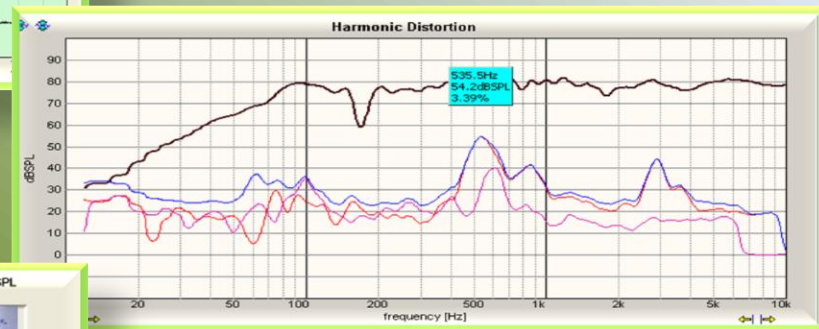


FineSPL Professional Audio

Acoustic Data Analyzing



Frequency/ Impulse Response



Harmonic Distortion

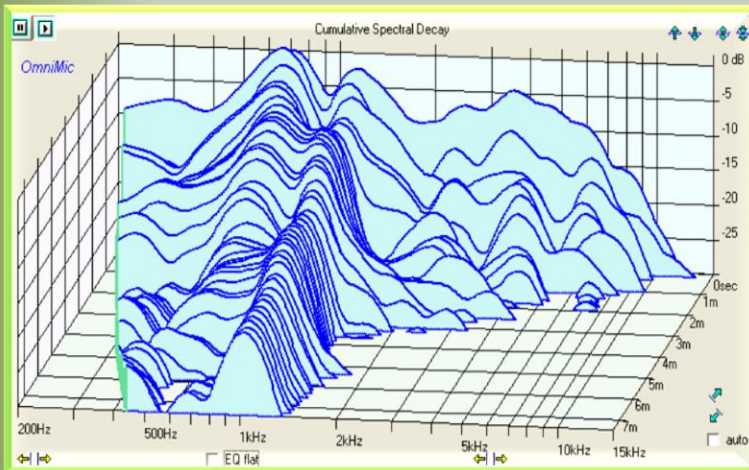


RTA Spectrum/ SPL Meter

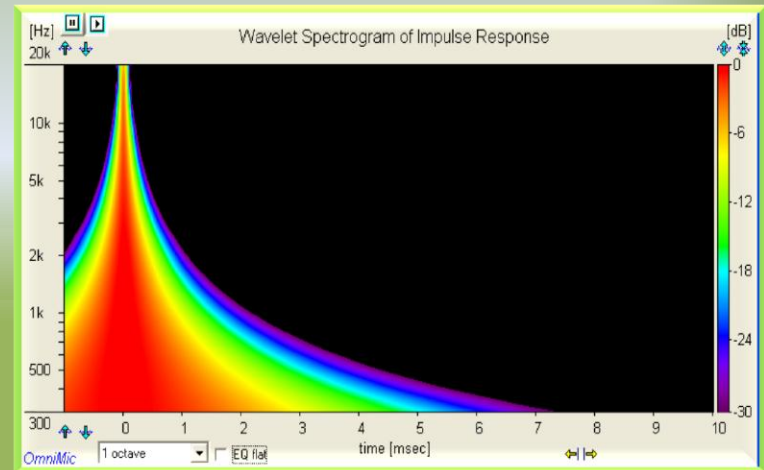


Phase Response

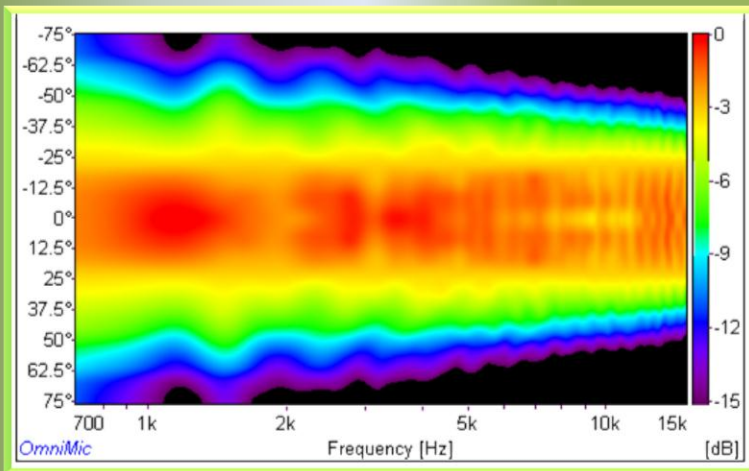
Acoustic Analysis



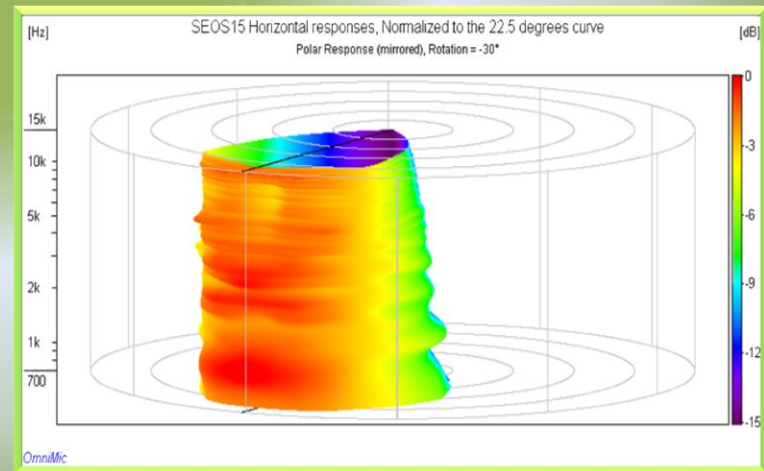
CSD- Waterfall



Wavelet Spectrogram

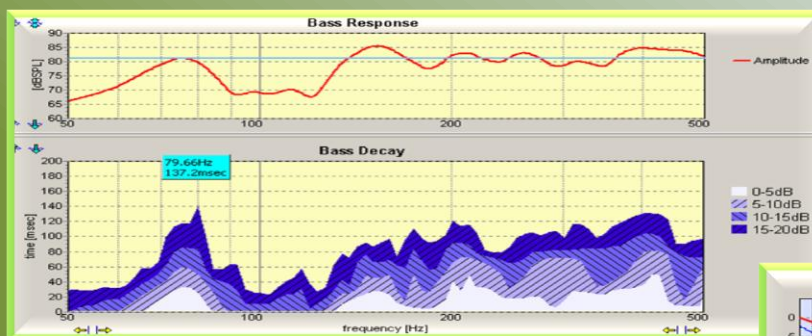


Polar Response



Polar Response

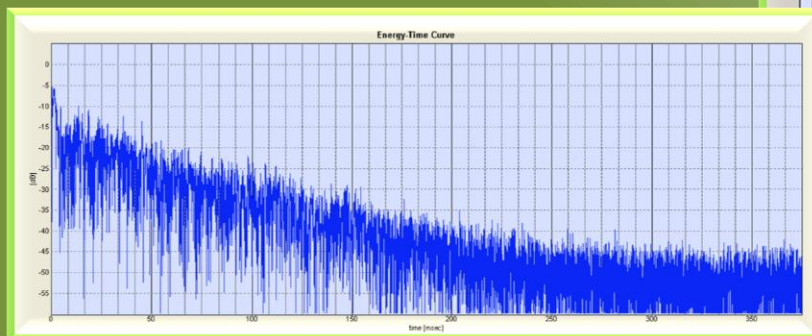
Acoustic measurement & Analysis



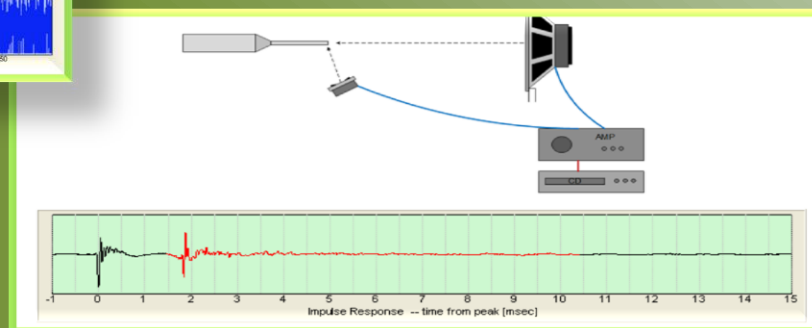
Bass Decay Response



RT-60 Reverberation



ETC- Energy-Time Curve



Delay Detect