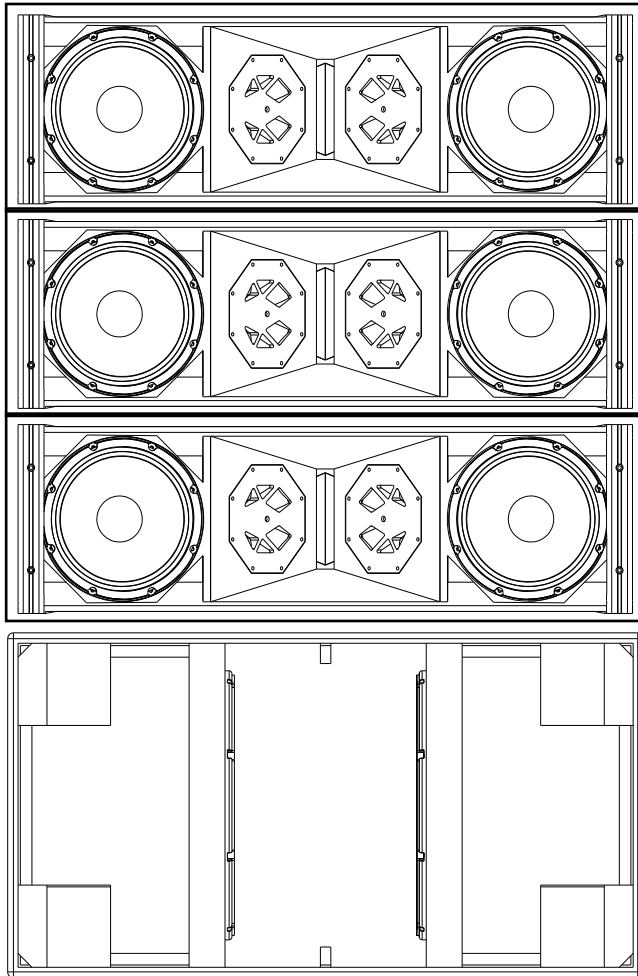




Tri-amp Line Array System Application Guides



Model:
LA-212 + LF-218

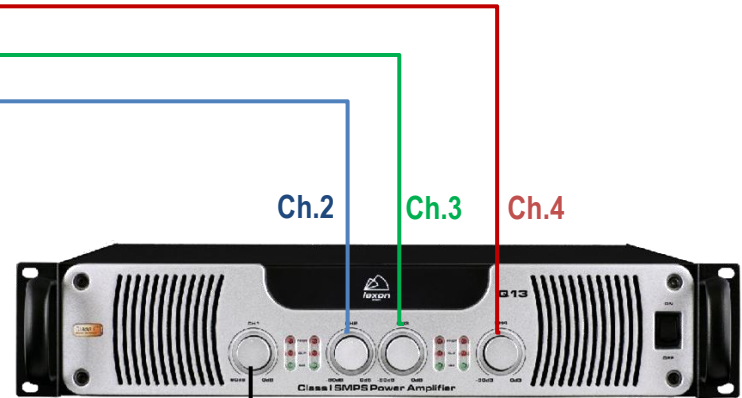
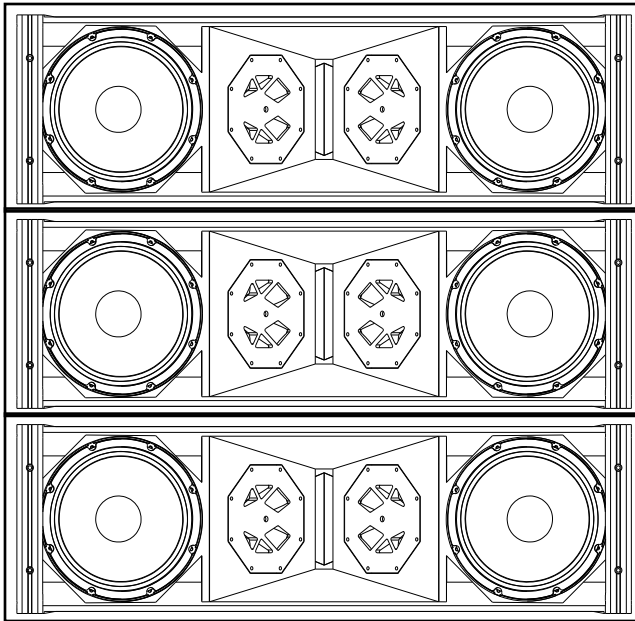
Application/ System Operation Guides

LA-212/LF-218
Tri-amp Line Array System

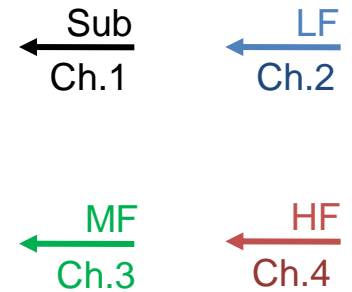
Project: Sagathadasa Stadium, Sri Lanka

Amplifier Connection Diagram

LA-212



4ch. Amplifier Q13
2200w x4 / 2 ohm



LF-218

Project Venue: Sagathadasa Stadium, Sri Lanka

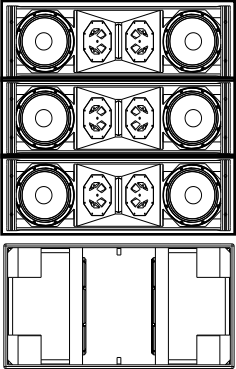
Event/ activity: International Sports & Athletics

Response Curve (processed)



System Quantity: 3pcs LA-212 (tri-amp line array cabinet)
 1pc LF-218 (Dual 18in sub)

Crossover Frequency: HF Driver: HPF: 1.5kHz, LPF: 18kHz
 Mid Fre. : HPF: 200Hz, LPF: 1.5kHz
 Low Fre. : HPF: 70Hz, LPF: 200Hz
 Sub Fre. : HPF: 28Hz, LPF: 70Hz

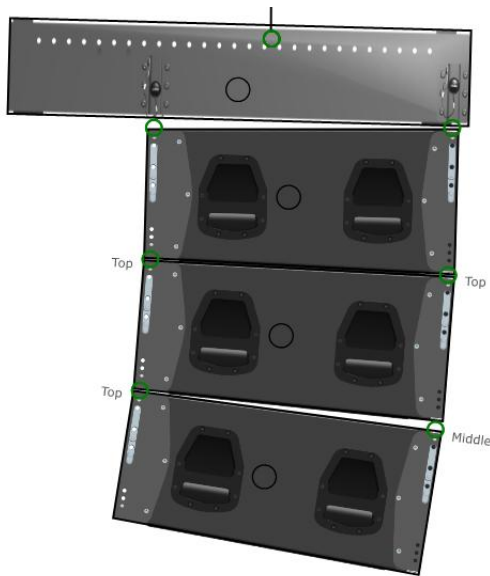


Subject: SPL Prediction Mappig

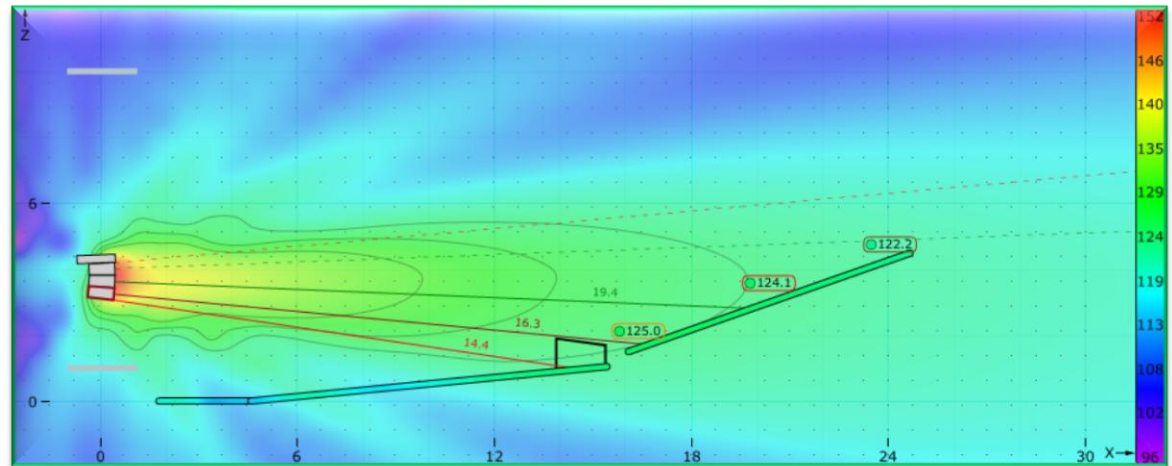
Project Venue: Sagathadasa Stadium, Sri Lanka



System Cabinet: 3 pcs Tri-amp Dual 12in Line Array LA-212 (Single cluster station)



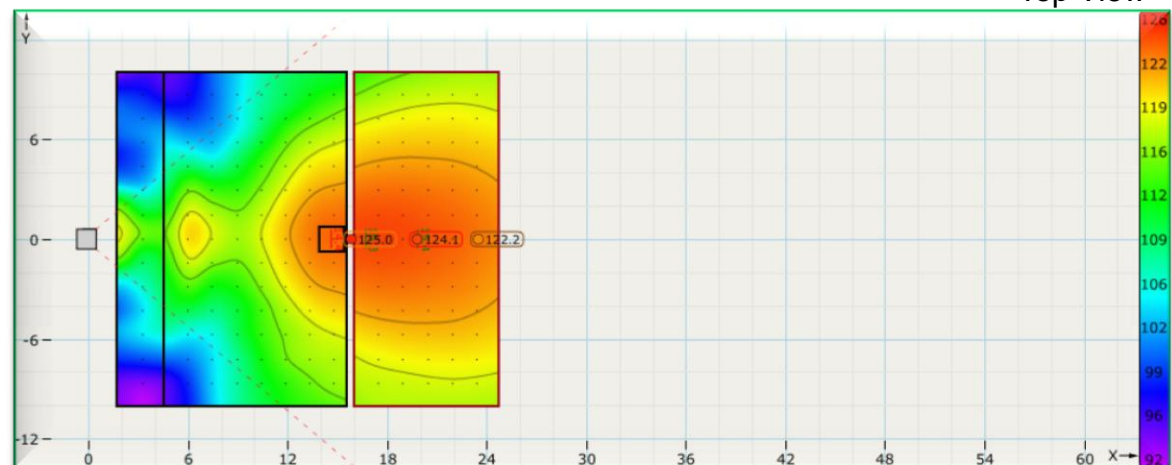
Side View



Aiming Coverage: Length- 30m, Width- 25m/ Per cluster

Single Cluster
SPL simulated at 1kHz
1/3 Octave

Top View



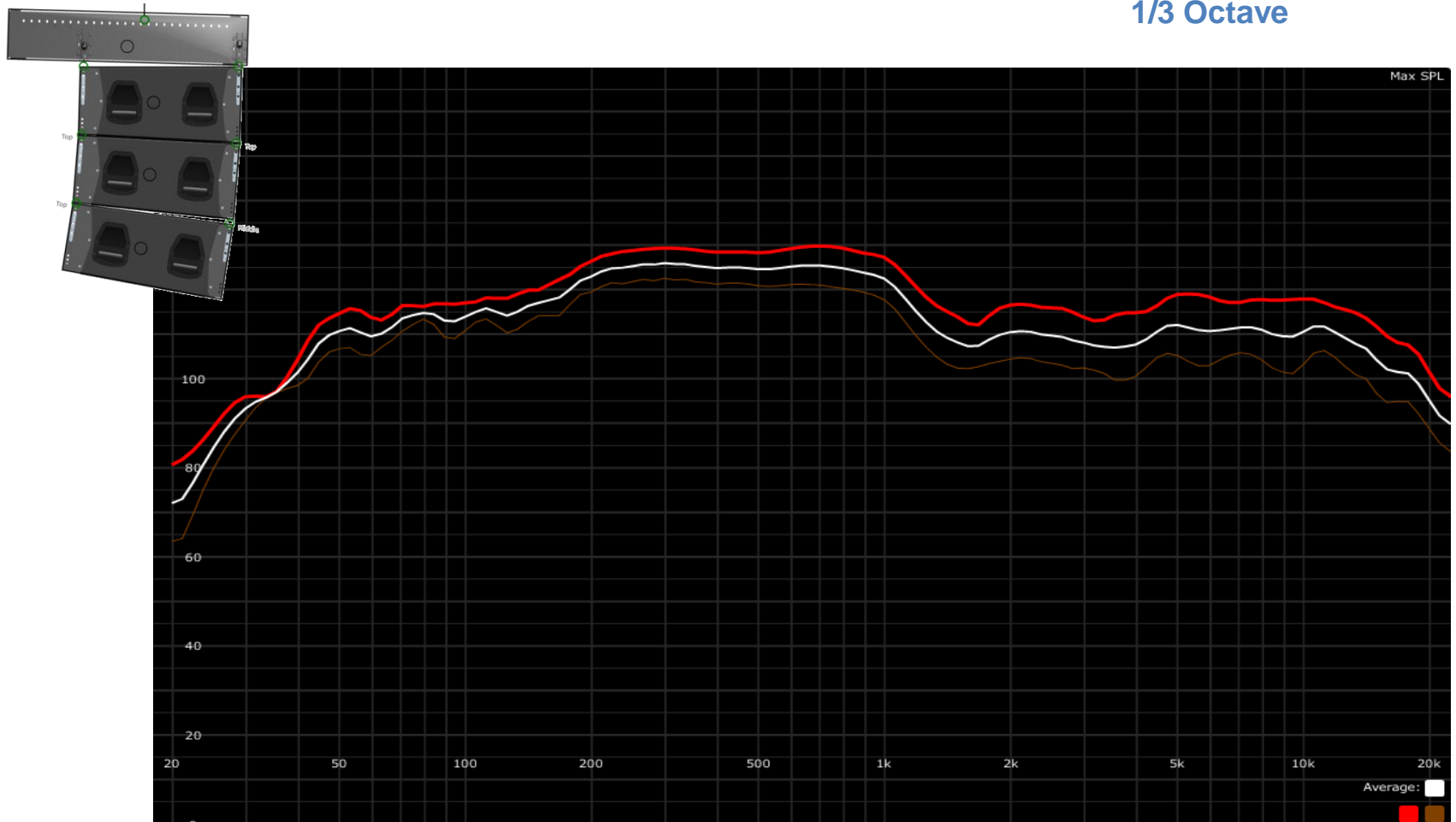
Subject: SPL Prediction Mappig

Project Venue: Sagathadasa Stadium, Sri Lanka



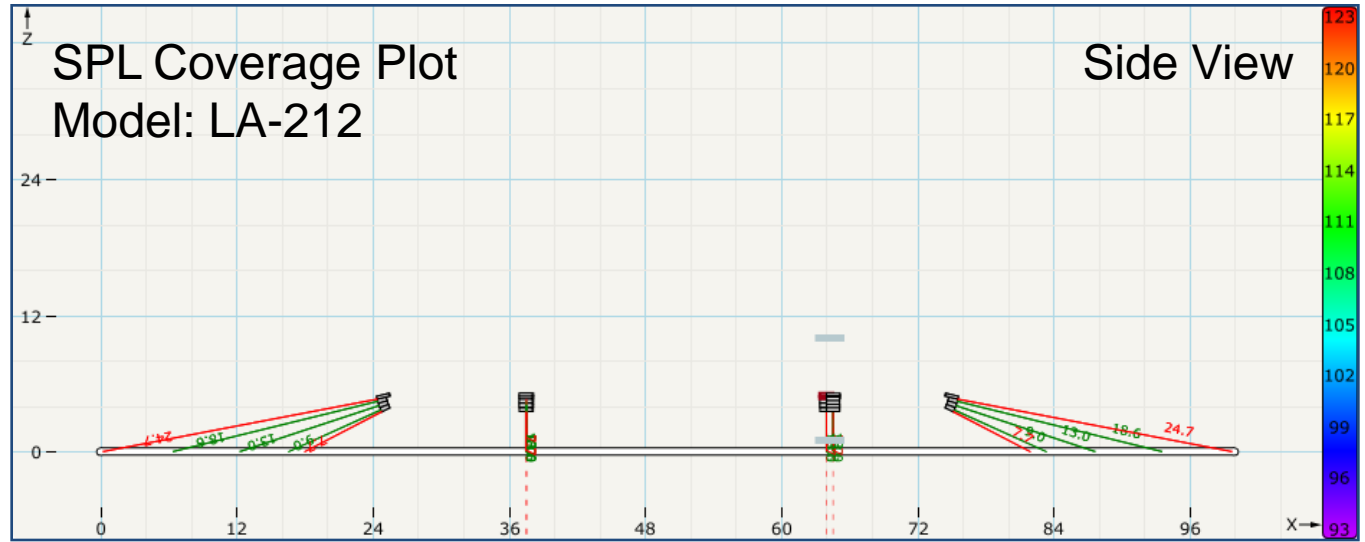
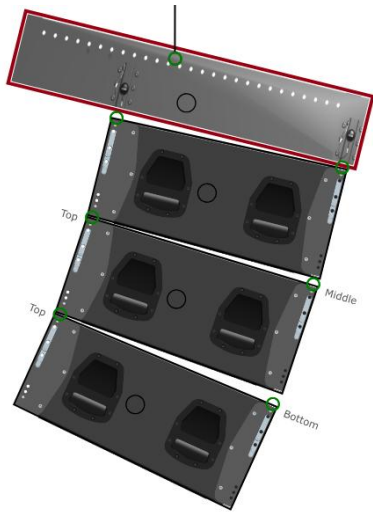
System Cabinet: 3 pcs Tri-amp Dual 12in Line Array LA-212

SPL simulated at 1kHz
1/3 Octave

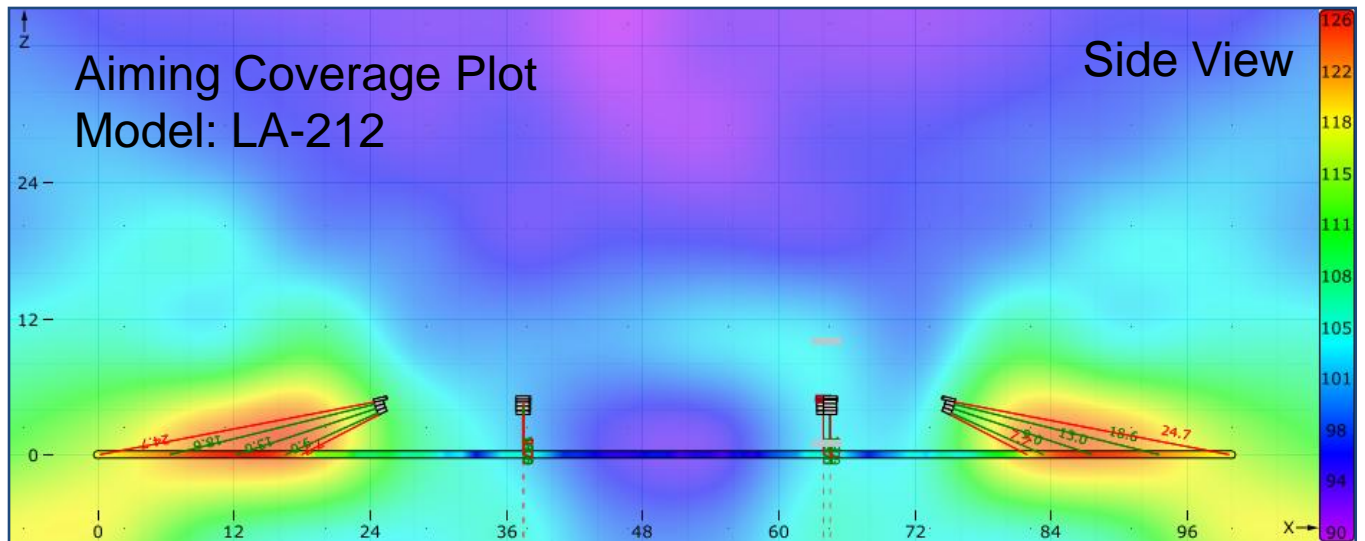


Frequency Response at different distance

Subject: SPL Prediction Mappig
Project Venue: Sagathadasa Stadium, Sri Lanka

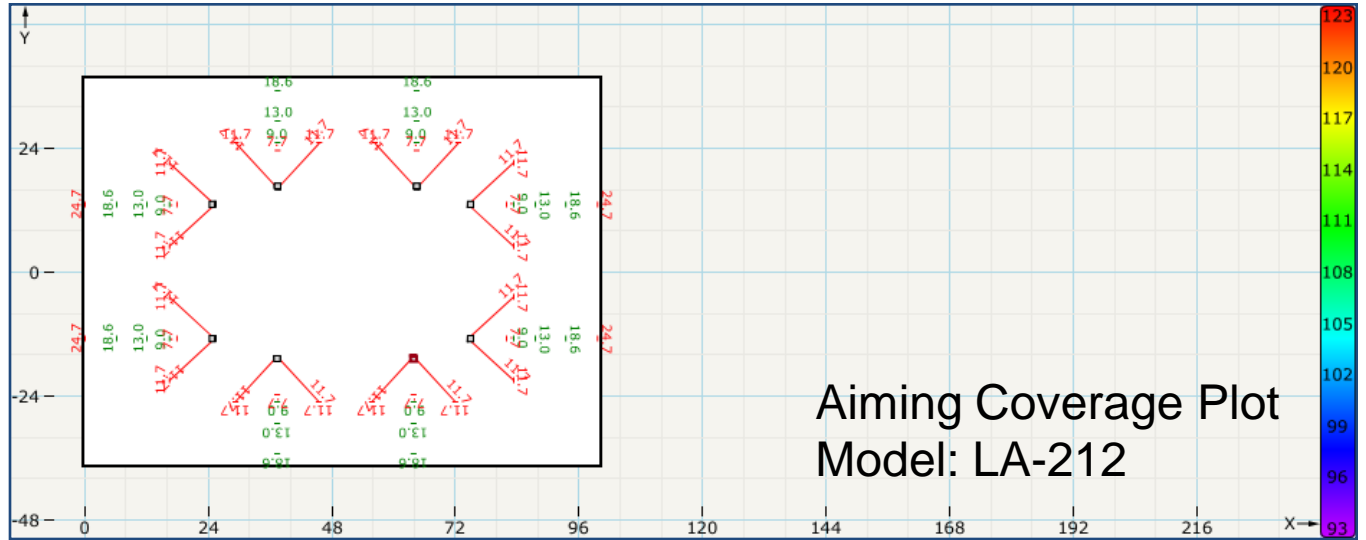
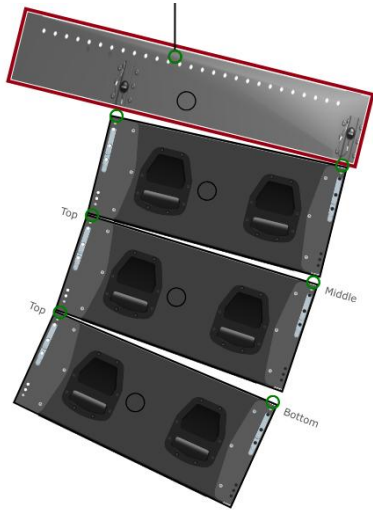


8 clusters of 3 cabinet
per cluster simulated
at 1kHz, 1/3 Octave



Subject: SPL Prediction Mappig

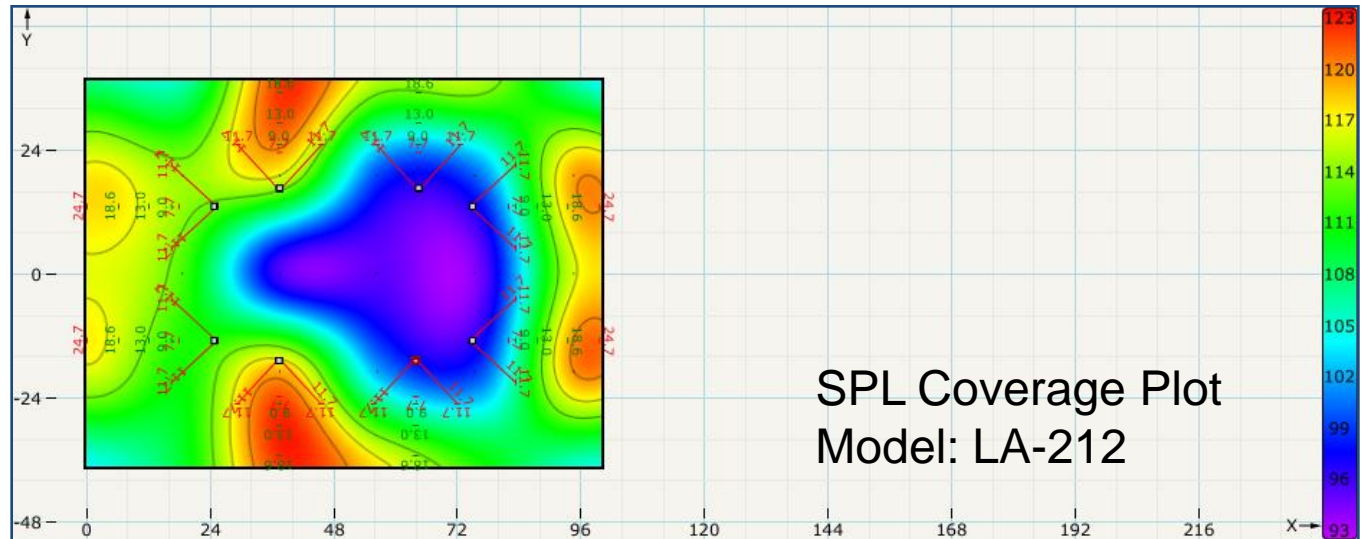
Project Venue: Sagathadasa Stadium, Sri Lanka



Aiming Coverage Plot
Model: LA-212

Top View

8 clusters of 3 cabinet
per cluster simulated
at 1kHz, 1/3 Octave



SPL Coverage Plot
Model: LA-212